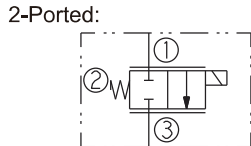
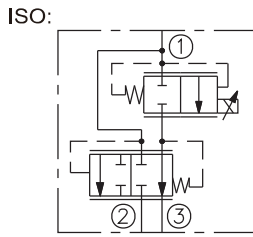


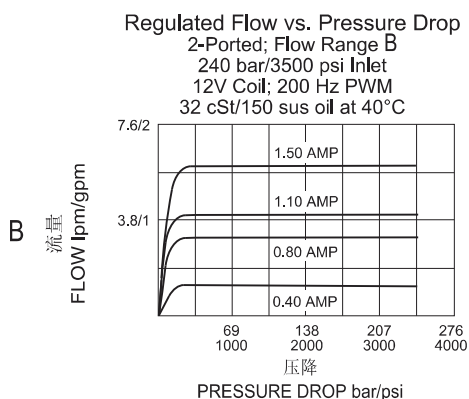
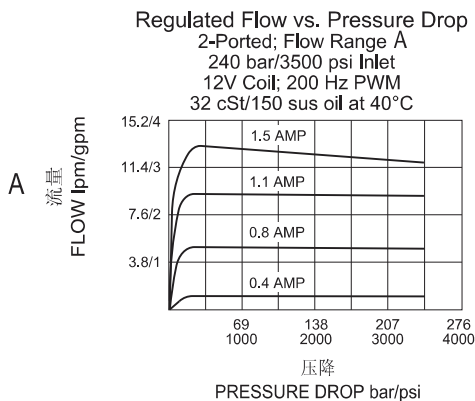
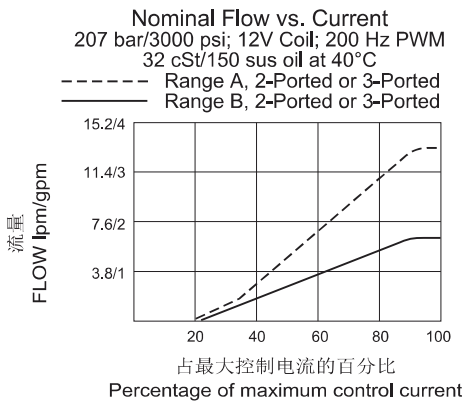


ZY-PV08-30 比例型流量控制插装阀 ZY-PV08-30 Proportional Flow Control Cartridge

机能符号 SYMBOLS:



性能图 PERFORMANCE: (Cartridge Only)



描述 DESCRIPTION:

电磁驱动、电气参数可变、三通、压力补偿、阀芯式、断电常闭、比例流量控制阀。可以用作优先流量调节器，带压力补偿、调节与旁通流量。当封闭旁通线路（油口②）时，也可用作节流型、2通、压力补偿流量调节器。
A solenoid-operated, electrically-variable, three-port, pressure-compensated, spooltype, normally closed when de-energized, proportional flow control valve. It can be used as a priority-type flow regulator with pressure-compensated, regulated and bypass flow. It can also be used as a restrictive-type 2-way, pressure-compensated flow regulator when the bypass line (port 2) is blocked.

工作原理 OPERATION:

ZY-PV08-30将调节油口③的流量，不受系统工作压力的影响。随着电磁阀中电流的增大，ZY-PV08-30的输出流量也将增大。
注：如果设备的优先流量油口被外部阀封闭（死点），将该阀用于旁通流量控制时，就需要在优先油口（油口③）处设置一个小的卸油孔。
The ZY-PV08-30 will regulate flow out of port 3 regardless of system working pressure. With an increasing current applied to the solenoid, the ZY-PV08-30 will increase output flow.
Note: When used as a bypass flow control in applications where the priority flow port will be blocked by external valving (dead-headed), a small bleed orifice is required at the priority port (port 3). Consult factory.

特性 RATINGS:

工作压力：入口：240 bar；油口②和③：207 bar
调节流量：旁通截止，范围 A：11.4 lpm 旁通截止，范围 B：5.7 lpm
旁通开启，范围 A：11.4 lpm 旁通开启，范围 B：5.7 lpm
额定输入流量：旁通开启，范围 A：15.2 lpm
旁通开启，范围 B：7.6 lpm
最大输入流量：旁通开启，范围 A：22.8 lpm
旁通开启，范围 B：22.8 lpm
内部泄漏：阀全闭时，207 bar 压力时为100 毫升/分，
介质：粘度介于7.4~420 cSt的矿物油或具有润滑作用的合成油
阀孔：ZY-VC08-3；

Operating Pressure: Inlet: 240 bar ; Ports 2 and 3: 207 bar
Regulated Flow Rate: Bypass Blocked, Range A: 11.4 lpm
Bypass Blocked, Range B: 5.7 lpm
Bypass Open, Range A: 11.4 lpm
Bypass Open, Range B: 5.7 lpm

Nominal Input Flow: Bypass Open, Range A: 15.2 lpm
Bypass Open, Range B: 7.6 lpm
Maximum Input Flow: Bypass Open, Range A: 22.8 lpm
Bypass Open, Range B: 22.8 lpm

Internal Leakage: 100 cc/min. fully closed at 207 bar
Fluids: Mineral-based or synthetics with lubricating properties at viscosities of 7.4 to 420 cSt ;

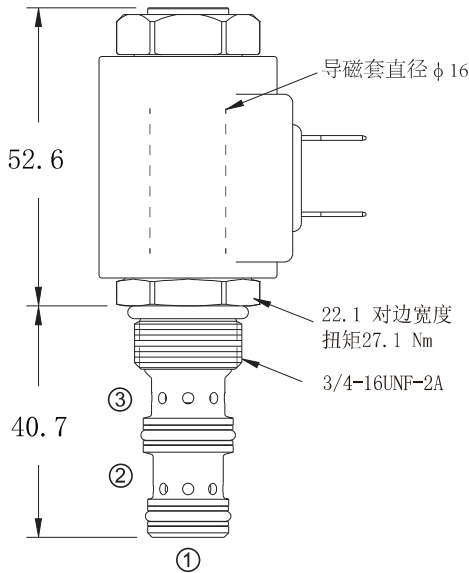
Cavity: ZY-VC08-3;

电气特性 (Electrical) : 2 种电压标准 (2 standard voltage ratings)

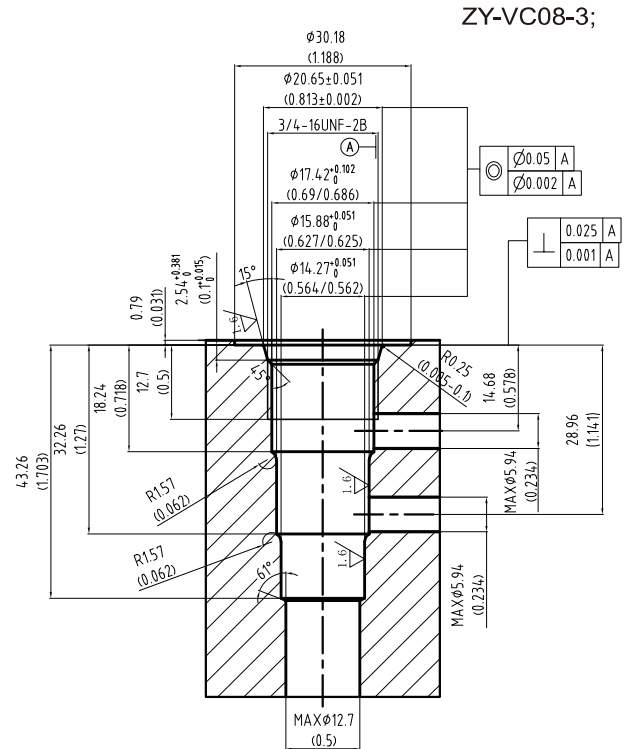
线圈电压	阈值电流	最大控制电流
12 VDC	400±100mA	1400±150mA
24 VDC	200±50mA	700±75mA

ZY-PV08-30

尺寸 DIMENSIONS:



阀孔 CAVITY:



特点 FEATURES:

- 优良的线性和磁滞特性。
- 阀芯与阀套硬处理，耐用。
- 电磁线圈电压和终端可选。
- 高效的湿式衔铁结构。
- Excellent linearity and hysteresis characteristics.
- Hardened spool and cage for long life.
- Optional coil voltages and terminations.
- Efficient wet armature construction.

订购型号 TO ORDER:

ZY-PV08-30

(Flow Range) 流量范围

(Required. See

Performance Curves)

A

B

(Option) 选件

(None) 无 (空白)

(Manual Override)

应急手控 M

(with Guard)

带保险 G

(Porting) 阀块油口

(For ordering valve block models, see:6.0.0.00)

订购阀块型号请参见:

6.0.0.00

(Seals) 密封材料

Buna N(Sta)

丁腈橡胶(标准型)

(Fluorocarbon) 氟橡胶

N

V

电压 Voltage

无线圈 0

(Less Coil)

12 VDC 12

24 VDC 24

标准线圈终端(VDC)

Termination(VDC)Std.Coil

DS Dual Spades 双扁形接头

DG DIN 43650

DL Leadwires 导线(2)

DL/W Leads w/Weather-Pack® Connectors 导线, 带连接器

DR Deutsch DT04-2P

E型线圈终端(VDC)

Termination(VDC)E-Coil

ER Deutsch DT04-2P (IP69K Rated)符合标准

Coils with internal diode are available. Consult factory.
提供带内置二极管的线圈, 请咨询工厂